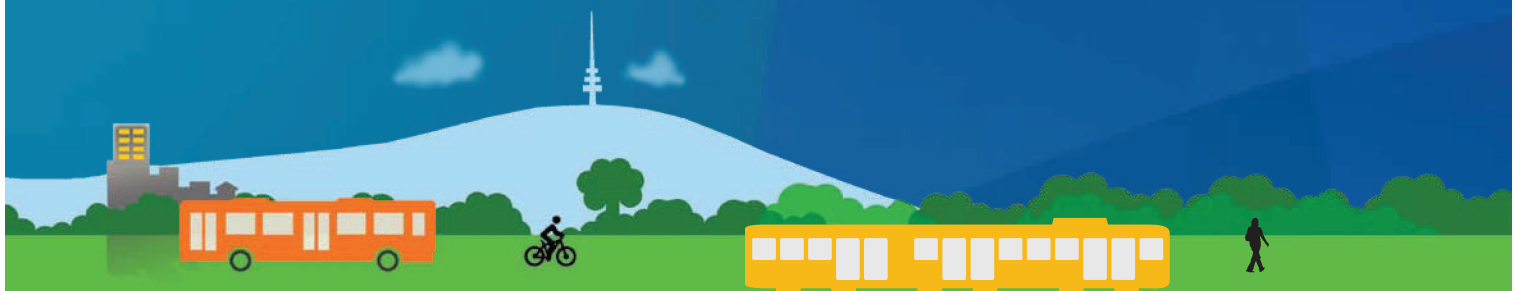


6.

TRANSPORT MONITORING AND REPORTING FRAMEWORK



6. TRANSPORT MONITORING AND REPORTING FRAMEWORK



The Sustainable Transport Plan established a number of long-term goals for the ACT. These included development of a more accessible transport system, improving efficiency through better pricing and resource allocation, and changing community attitudes towards non-car based transport.

Transport for Canberra establishes a new 2016 mode share goal, with the ambition of moving steadily closer to our long-term mode share targets.

Between now and 2026 balanced investments in policies, urban planning, programs and infrastructure will encourage an additional 48,000 Canberrans at least to opt for a sustainable mode of transport for their daily commute, find new ways to work like telecommuting, or find work closer to home to make active travel an easier choice. The goals in Table 8 will act as a guide to help government, the private sector and the community measure our progress towards the long-term 2026 mode share targets.

6.1 Reducing greenhouse gas emissions from transport

Achieving the 2026 target would reduce transport emissions by 14% relative to 2026 business as usual estimates.

These targets are an important part of reducing transport greenhouse gas emissions in line with the 2020 and longer term emissions reduction targets, as the 2026 mode share goals would reduce emissions by an estimated 65 to 100kt per annum by 2020.

Creating a more efficient vehicle fleet will also reduce emissions. Initiatives like the Green Vehicle Duty Scheme and support for electric cars have good short term emissions reduction potential in the transport sector. Further detail, including modelling, is included in the ACT Government's draft Weathering the Change Action Plan 2.

6.2 Transport report card

A program to monitor, evaluate and report will enable the ACT Government to effectively assess the success of investments, measure progress and improve project performance. Improvements to the ACT's travel data and modelling and analysis capability will ensure future transport planning can be undertaken based on accurate information and sound analysis.

Transport for Canberra will also establish additional ways to measure and report annually our progress in the transport system. These measures—and the outcomes for each policy below—will be included as a Transport for Canberra report card to be released each year from 2012–13. Progress on achieving a safe transport system will be measured through the ACT Road Safety Strategy and Action Plan Framework. Progress on transport and land use integration will be reported as part of the new ACT Planning Strategy, and transport emissions reductions will be reported through Weathering the Change and legislated emissions-related reporting.

TABLE 8: NEW 2016 MODE SHARE TARGET (JOURNEY TO WORK)

Mode	2006 actual	2011 target	NEW 2016 target	2026 target
Walking	5%	6%	6.5%	7%
Cycling	2.5%	5%	6%	7%
Public transport	7.9%	9%	10.5%	16%
Total	15.4%	20%	23%	30%

6.3 Delivering Transport for Canberra

The Government has committed over \$200m to transport infrastructure, programs and services in 2010-11 and 2011-12 to begin the transition to the transport system envisaged in Transport for Canberra. The actions and targets in Transport for Canberra will be an important guide to the Government’s continued delivery of programs, development of policy, and Budget decision making.

We will examine the most cost effective ways to meet the targets and

deliver the actions within Transport for Canberra. This will mean some changes in the way our transport services operate (particularly in public transport), and a change in the balance of funding for transport to focus on more sustainable ways to manage travel demand. We will also consider the financial and economic costs and benefits of infrastructure and recurrent initiatives to deliver the Transport for Canberra actions, and progressively deliver transport improvements each year in the context of demand for services and infrastructure across all sectors.

TABLE 9: TRANSPORT FOR CANBERRA PROGRESS REPORTING

Transport performance measure	Target	How it will be measured
<p>1. Journey to work mode share for:</p> <ul style="list-style-type: none"> walking cycling public transport 	<p>By 2016, increase work trips for:</p> <p>Walking to 6.5%</p> <p>Cycling to 6%</p> <p>Public transport to 10.5%</p> <p>By 2016, 60% of ACT adults and 20% of ACT children meet National Physical Activity Guidelines.</p>	<p>Combination of ABS Census data, public transport ticketing data, cycle counts, Walk21.</p> <p>General Health Survey, ACT Year 6 Physical Activity and Nutrition Survey, Australia and Secondary School Alcohol and Drug Survey.</p>
<p>2. Sustainable travel for all trips in the ACT:</p> <ul style="list-style-type: none"> average number of trips per person per weekday/weekend purpose of different trips distance of different trips percentage of trips by public transport percentage of trips by cycling percentage of trips by walking 	<p>Establish a baseline and methodology for average number of trips per person per day in the ACT.</p> <p>Increase percentage of all trips by sustainable transport each year.</p> <p>Establish a baseline (2012) and increase percentage of children travelling to school by active travel (walking, cycling, scooting) by 2016.</p>	<p>Travel survey to establish baseline average number of trips per person per day.</p> <p>From 2012–13, report on percentage of sustainable transport trips relative to baseline.</p> <p>ACT Year 6 Physical Activity and Nutrition Survey and surveys conducted at schools participating in active travel programs.</p>
<p>3. Accessibility of the transport system:</p> <ul style="list-style-type: none"> percentage of population within 500m of a regular bus stop percentage of population within 750m of a Rapid service bus stop percentage of population within 5 km of a Park and Ride facility 	<p>Minimum coverage standards are set in 2013, and targets are met for 2016 and 2021.</p> <p>New suburbs are more supportive of active travel.</p> <p>Implement the ACT Accessible Public Transport Action Plan.</p>	<p>Combination of NetBI software and mapping.</p> <p>Establish an ACT methodology to measure suburb accessibility for pedestrians and cyclists in 2012.</p> <p>Accessible Public Transport Action Plan reporting.</p>

TABLE 9: TRANSPORT FOR CANBERRA PROGRESS REPORTING (CONTD)

Transport performance measure	Target	How it will be measured
5. Transport network performance: <ul style="list-style-type: none"> travel time by mode (public transport, cars, cycling and walking) wait time for connections at stations number of tonne-kilometres by mode 	Improve freight, public transport, cycling and maintain passenger vehicle travel times. Average wait time for connections to the Frequent Network at stations: <ul style="list-style-type: none"> By 2013, average wait time for connections from coverage to frequent service – 7.5 minutes; from frequent service to coverage service – 15 minutes. By 2016, average wait time for connections from coverage to frequent service – 5 minutes; from frequent service to coverage service – 10 minutes. 	Annual travel time analysis for all modes, with benchmarking in 2012. Average wait times to be measured through real time passenger information.
6. Safe transport system	See ACT Road Safety Strategy.	Through ACT Road Safety Strategy and Action Plan.
7. Integrated transport and land use planning	See ACT Planning Strategy.	Through ACT Planning Strategy.
8. Transport emissions	Reduce vehicle kilometres travelled by private passenger car through mode shift. Increase the efficiency of travel by decreasing the emissions intensity of the ACT passenger vehicle fleet, and increasing efficiency of the ACT public transport fleet.	Mode share targets (measure 1) and legislated emissions reporting. National Transport Commission: Annual Report on Emissions of Australian Vehicle Fleet. ACTION annual report: emissions per vehicle decreases annually.
9. Progress of Transport for Canberra actions	Release an annual progress report on implementation of Transport for Canberra.	Report on Transport for Canberra released by December each year.

6.4 Monitoring and reporting action

ACTION 33

Release an annual Transport for Canberra update report from 2012–13, and review and update Transport for Canberra in five years.

ACTION 34

Progressively improve transport policies, programs, infrastructure and services each year, taking into account the benefits and costs of initiatives to deliver Transport for Canberra actions and meet targets.